

**GHS Georgia Day Video 2022
Guided Listening Questions - Elementary**

1.) When was the colony of Georgia founded?

A.

1729

B.

1733

C.

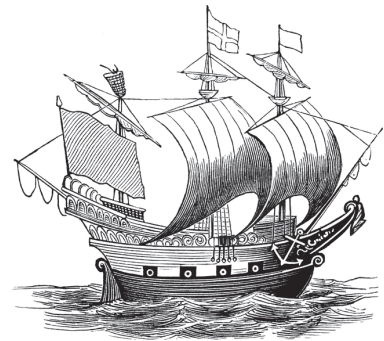
1735

2.) What was the name of the ship that brought Oglethorpe and the first British colonists to Georgia?

A. The Anne

B. The James

C. The Mary



3.) How long were the first 112 colonists at sea on the ship Anne?

A. One month

B. Two months

C. Three months



4.) Out of the original thirteen colonies, what number was Georgia?

- A. The 1st
- B. The 7th
- C. The 13th

5.) Who was the leader of the Yamacraw Indians in Georgia?



A.
Chief
Tomochichi



B.
General
Oglethorpe



C.
Mary
Musgrove

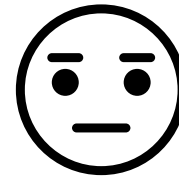
6.) What was the relationship of General Oglethorpe the Yamacraw Indians?



A.
Allies/Friendly

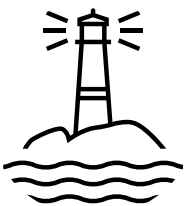


B.
Enemies/Unfriendly



C.
No Relationship

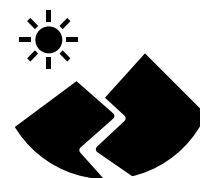
7.) What is Milledgeville's geographic region?



A.
Coastal Plain



B.
Piedmont



C.
Mountains

8.) What geographic feature has most influenced Columbus' growth and development?



A.
Stone Mountain



B.
Lake Lanier



C.
Chattahoochee
River

9.) What was one of the main products shipped on the Chattahoochee River in Columbus?



A.
Cotton

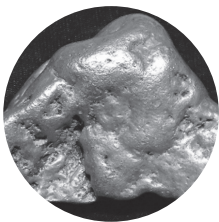


B.
Peaches

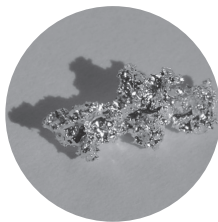


C.
Cheese

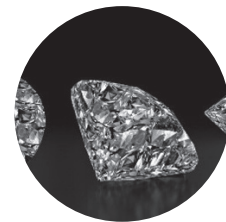
10.) What was discovered in North Georgia during the 1820s?



A.
Gold



B.
Silver



C.
Diamonds

11.) What city became the fifth and current capital of Georgia?

- A.** Atlanta
- B.** Macon
- C.** Columbus

GHS Georgia Day Video 2022
Guided Listening Questions - Elementary

Answer Key

- 1.) 1733
- 2.) The Anne
- 3.) Three months
- 4.) The 13th
- 5.) Chief Tomochichi
- 6.) Allies/Friendly
- 7.) Piedmonth
- 8.) Chatahoochee River
- 9.) Cotton
- 10.) Gold
- 11.) Atlanta