



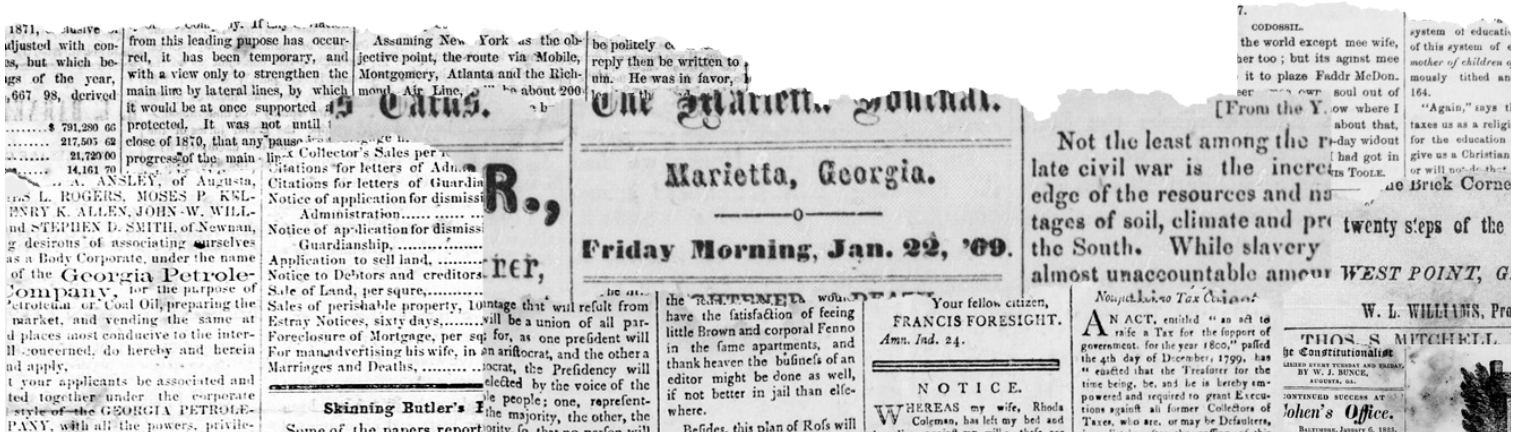
GEORGIA HISTORY FESTIVAL

“The Reality of Our Liberty”:

THE FIRST AMENDMENT AND FREEDOM OF THE PRESS

PRIMARY SOURCE SET

GEORGIA HISTORICAL SOCIETY





GEORGIA
HISTORY FESTIVAL

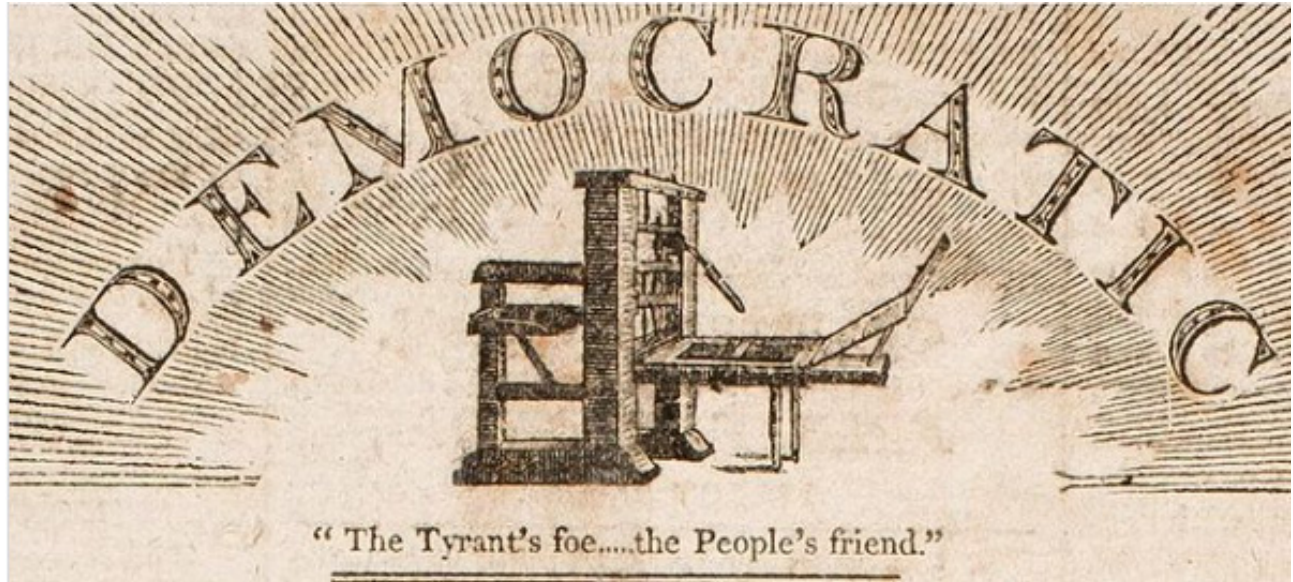
“The Reality of Our Liberty”:

The First Amendment and Freedom of the Press

This Primary Source Set is a curated collection of historical documents and images connected to the 2024-2025 Georgia History Festival theme. An investigation of these sources, coupled with the digital resource and educators’ guide, will help students understand the role and responsibility of the press throughout the history of Georgia and the United States.

Included in the appendix of this document are several resources from the Library of Congress and National Archives for the study of primary and secondary sources.

POLITICAL CARTOONS/ILLUSTRATIONS



"The Tyrant's Foe -- The People's Friend," (with image of printing press). The Democratic Press, Philadelphia, 1807. American Antiquarian Society

What do you SEE in the image?

What do you THINK about what you see?

What QUESTIONS do you have about what you see?

PHOTOGRAPHS



Linotype operators on the *Chicago Defender*, Negro newspaper, Chicago, Illinois
Lee, Russell, 1903-1986, photographer Farm Security Administration – Office of
War Information Photograph Collection (Library of Congress)

PHOTOGRAPHS



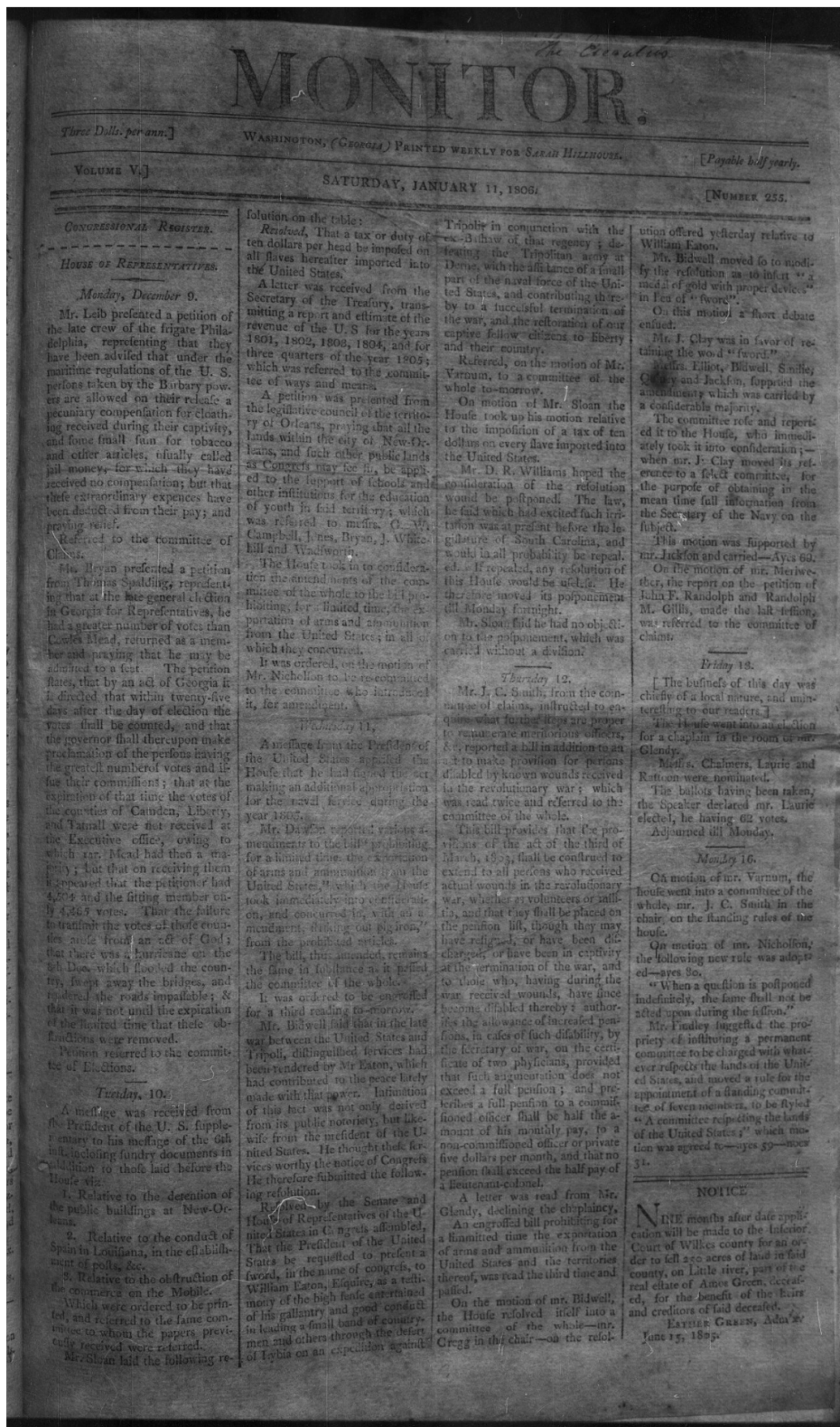
Linotype operator on the *Chicago Defender*, Negro newspaper, Chicago, Illinois
Lee, Russell, 1903-1986, photographer Farm Security Administration – Office of
War Information Photograph Collection (Library of Congress)

PHOTOGRAPHS



Associated Press. Ted Turner in satellite garden of TBS. April 19, 1985. GHS 1361 Georgia Historical Society Photograph collection. GHS 1361-PH-43-55-05. Georgia Historical Society, Savannah, Georgia

NEWSPAPER PAGES – CAPTIONS



Washington, Ga.: S. Hillhouse. "The monitor, 1806 January 11." Georgia Newspaper Project. 1806-01-11, https://dlg.galileo.usg.edu/do:dlg_ghn_sn83020902-1806-01-11-ed-1.

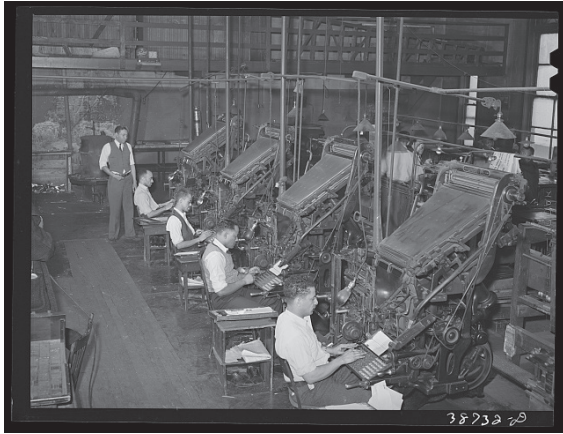
NEWSPAPER PAGES – CAPTIONS



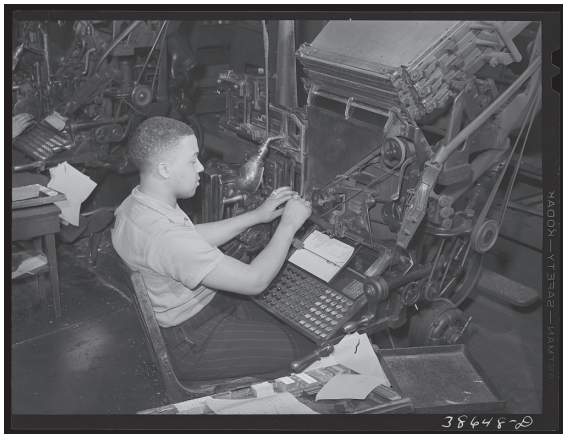
The Cherokee Phoenix, New Echota, GA 1828

PRIMARY SOURCE INVESTIGATIONS

Photograph Analysis



Project Image A on the board or provide as a hand-out to students, without the caption. Using either the National Archives Photo Analysis or the Library of Congress Primary Source Tool, have students record their observations, inferences, and questions about the image.

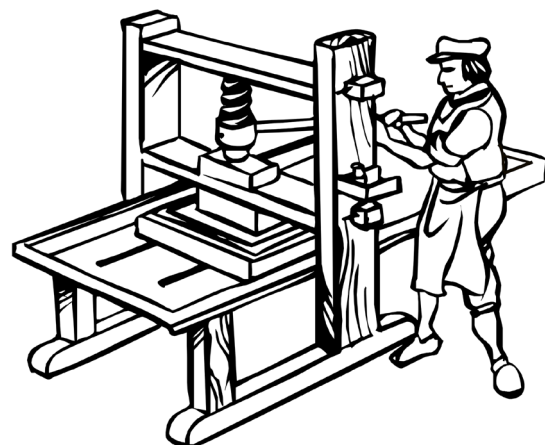
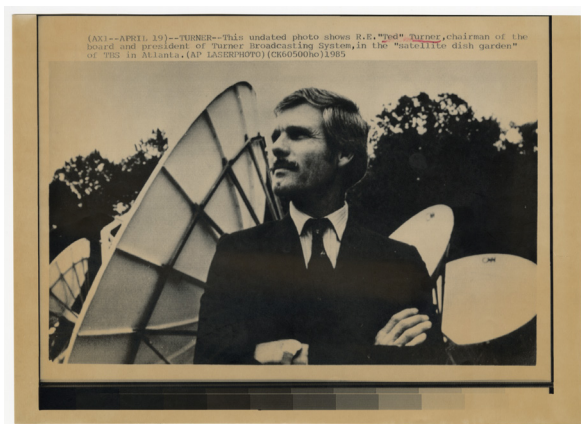


Provide students with Image B, a close up of the same room in Image A. Does the close up image allow for additional observations, inferences, and questions?

Now provide students with Image C and again complete the photo analysis. Have students research the process of using a colonial-era printing press, the linotype machine, and the modern process of spreading information via satellite communication.

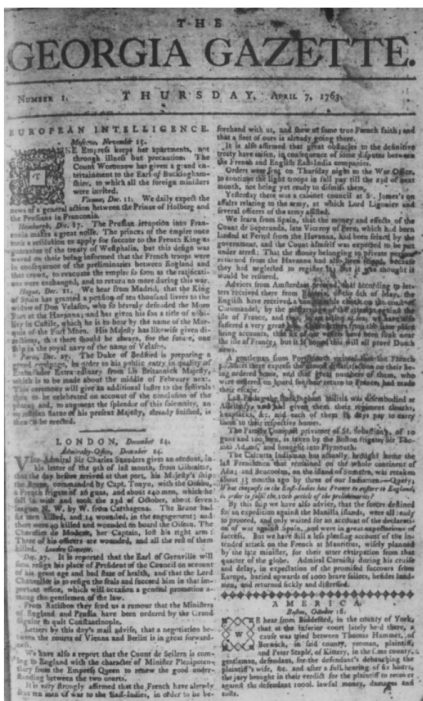
Final activity

Have students create a visual timeline of the machinery of communication, including what facts they found most interesting, as well as questions that warrant further research.

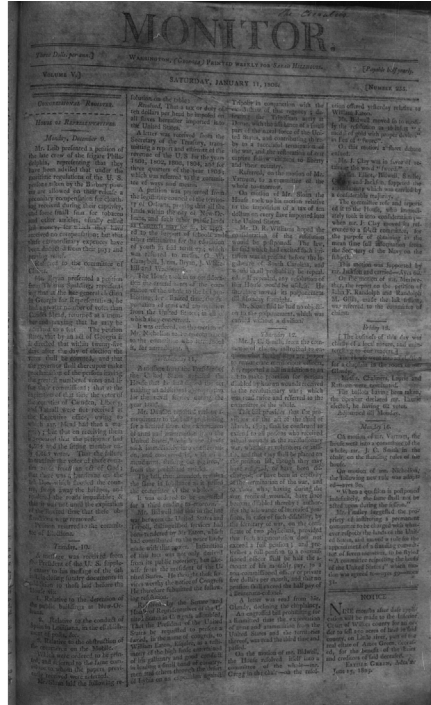


PRIMARY SOURCE INVESTIGATIONS

A - Georgia Gazette



B - Monitor



C - Cherokee Phoenix



Document Analysis

Provide students with a copy of each newspaper, large enough for them to read, or provide magnifying glasses. Using the Analyze a Written Document worksheet from the National Archives, have students record their observations, inferences, and questions about each newspaper.

Ask students what details immediately stand out to them. What do they find most interesting? What do they find most challenging?

Have students create a chart on which they can record similarities and differences among the newspapers. Include a fourth column in the chart. Have students select a current hard copy newspaper and record the similarities and differences to the earlier versions.

APPENDIX

Digital images of the newspapers can be found here:

Georgia Historic Newspapers

- [Georgia Gazette](#)
- [The Monitor](#)

Library of Congress

- [The Cherokee Phoenix](#)

Primary Source Analysis Tools

[National Archives Document Analysis](#) Worksheets

[Library of Congress Primary Source Analysis Tool](#)